

Sabroe SMC 112 S mk2 package

Specifications

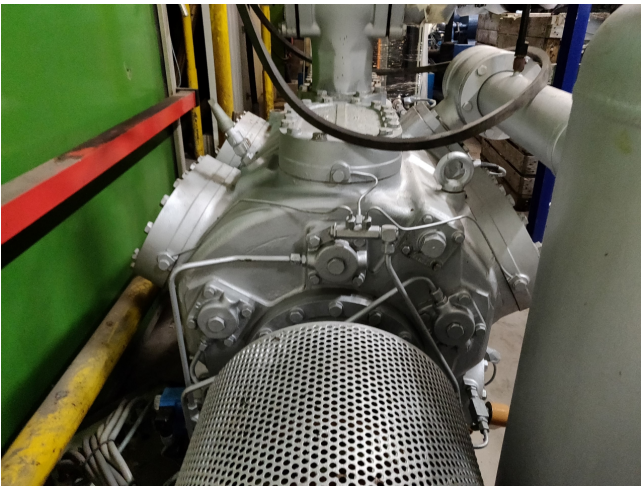
Бренд	Sabroe
Тип	SMC 112 S mk2 package
Хладагент	NH 3 (ammonia)
кВт at +10°C/+40°C	510,9
kW at 0°C/+40°C	348,8
kW at -5°C/+40°C	283,2
кВт at -10°C/+40°C	226,8
кВт at -20°C/+40°C	138,1
кВт at -30°C/+40°C	76,2
кВт at -40°C/+40°C	35,2
Электродвигатель	110 kW at 1475 RPM
Спес	
На стальной раме	✓
Жидкостный ресивер	✓
Панель управления	✓
m3 / h	655
Package / Rack	✓
Stock	1



Description

Used Sabroe SMC 112 S mk2 package

Used well maintained Sabroe SMC 112 S compressor, with 110 kW electromotor 1475 RPM. Our capacity table is based on R717. For all the other specs (if available), see the picture of the manufacturer model plate or the attached pdf file. *Why choose for HOSBV? Were not only the largest used refrigeration specialist in Europe, but also, we deliver all equipment including an extensive test, warranty and industrial cleaning. *Optional we can also perform a new paint job and arrange the logistics.



Model	Number of cylinders	Bore x stroke mm	Swept volume at 1800 rpm m³/h	Nominal capacities kW				Dimensions in mm Direct coupled unit			Weight including motor kg	Sound pressure level dB(A)	
				R217			R404A	L	W	H			
				Single/high stage -10/+35°C	Booster -40/-20°C	Single/high stage 0/+35°C	Single/high stage -10/+35°C						
SMC 104 S	4	100 x 80	271	129	209	35	205	132	2400-2800	1228	1305	830	80
SMC 104 L	4	100 x 100	339	167	266	46	208	235	2400-2800	1228	1303	830	81
SMC 104 E	4	100 x 120	339	206	324	57	N/A	N/A	2400-2800	1228	1303	830	81
SMC 105 S	6	100 x 80	407	194	313	52	308	197	2400-2800	1190	1236	935	81
SMC 105 L	6	100 x 100	500	251	398	70	312	202	2400-2800	1190	1236	935	82
SMC 105 E	6	100 x 120	500	309	486	86	N/A	N/A	2400-2800	1190	1236	935	82
SMC 108 S	8	100 x 80	543	259	427	70	422	263	2400-2800	1201	1233	990	82
SMC 108 L	8	100 x 100	679	335	521	93	416	270	2400-2800	1201	1233	990	82
SMC 108 E	8	100 x 120	679	412	648	115	N/A	N/A	2400-2800	1201	1233	990	83
SMC 112 S	12	100 x 80	824	388	626	106	616	395	2425-3000	1290	1334	1660	83
SMC 112 L	12	100 x 100	1018	512	796	140	624	405	2425-3000	1290	1334	1660	83
SMC 112 E	12	100 x 120	1018	618	972	172	N/A	N/A	2425-3000	1290	1334	1660	83
SMC 116 S	16	100 x 80	1086	517	834	141	821	526	2475-3200	1301	1334	1760	84
SMC 116 L	16	100 x 100	1357	669	1062	187	811	539	2475-3200	1301	1334	1760	84
SMC 116 E	16	100 x 120	1357	824	1297	230	N/A	N/A	2475-3200	1301	1334	1760	84

Nominal capacities are based on 5°C subcooling and 1500 mm

PUBLIC 0812 2012.11-1